

Easi-Set Producers Capture 2011 CUP

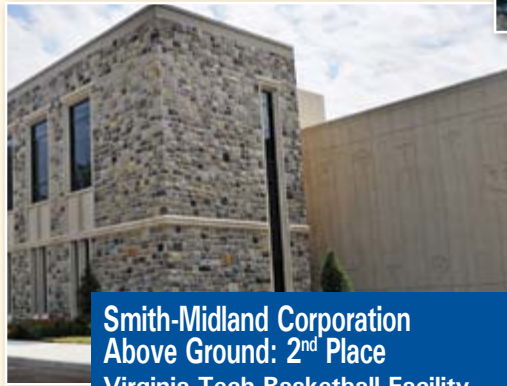
Each year, the NPCA sponsors the *Creative Use of Precast* (CUP) awards program to recognize projects that promote the innovative and cost-saving advantages of precast concrete. Living up to their tradition of excellence, three **Easi-Set** producers received honors in the 2011 competition. Congratulations to **StructureCast**, **Smith-Midland**, and **Utility Concrete Products** for the award-winning projects below.



StructureCast
Underground: 2nd Place
Pedestrian Undercrossing
Rancho Cucamonga, CA

When the San Bernardino Associated Governments (SANBAG) were ready to build an underground passageway at the Rancho Cucamonga Station of Metrolink, they needed a tunnel that could structurally withstand the forces of one of the busiest rail lines in California, meet aesthetic requirements on the interior, and meet stringent inspections on a tight budget. In addition, the tunnel had to be installed in just 48 hours.

Due to its proven past performance, **StructureCast** was commissioned by SANBAG for the project and a box culvert cast in 16 sections was produced, including skylights with cast-in block, approach slab lintels and platform units. The use of a precast concrete design and the “just in time” delivery system allowed this project to be an overwhelming success.



Smith-Midland Corporation
Above Ground: 2nd Place
Virginia Tech Basketball Facility
Blacksburg, VA

In building a new practice facility for their basketball teams, Virginia Tech officials needed an exterior façade that would blend with existing campus buildings but also feature a “wow” factor.

Architect Tae Jung created a design that incorporated the natural stone facade found on buildings throughout the campus with precast concrete panels that matched the stone. He also wanted the precast panels to feature cast-in shapes and figures to give the building a signature look.

With exceptional creativity, **Smith-Midland** designed and produced precast panels featuring Virginia Tech logos, basketballs, the school crest and shapes that resemble the keys of a piano. The project challenged **Smith-Midland** to create custom wooden forms to cast this unique customization, which resulted in a final product that “wows” visitors.



Utility Concrete Products
Underground: 3rd Place
Canadian National Intermodal Yard
Chicago, IL

With a successful track record of producing StormTrap products, **Utility Concrete Products** successfully installed an extensive underground stormwater management system in just one day for Canadian National railroad’s new intermodal automated gate system in Chicago, providing a 20 percent savings over the originally planned system.

After installation, the surface was immediately ready for construction traffic to keep the project moving. And, the system offers easy access after installation due to the clear spans and open galleries that are inherent in the system.

27TH ANNUAL EASI-SET BUILDING PRODUCERS SEMINAR

Thursday, October 27
Friday, October 28
Saturday, October 29

Hosted by
SMITH-MIDLAND
EXCELLENCE IN PRECAST CONCRETE
at

Fredericksburg Hospitality House
Fredericksburg, VA

Producer News

StructureCast Receives Building Training



This spring, **StructureCast** staff received production training for the **Easi-Set** Buildings product line. They enthusiastically welcomed **Easi-Set** technical staff, who showed them how they could reduce expenses on purchased items by using forming techniques on the Restroom Series Buildings.

At the **StructureCast** facility, the buildings are cast on fiberglass decks using wooden rails on an outside production line. Concrete is delivered to

the forms in concrete buckets using a 90-ton RT crane, or by truck from a 5-yard capacity batch plant. **StructureCast** is well positioned to provide the **Easi-Set** Buildings to a vast agricultural and industrial market in the Los Angeles/Bakersfield area. **StructureCast** also welcomed a new sales associate, **Kevin McNece** to their program. —*Rick Groves*



Shea Concrete Now Producing J-J Hooks

In early June, **Shea Concrete Products**, a current producer of the **Easi-Set** Transportable Building Series, received production training for **J-J Hooks**, which they recently added to their product line.

Shea is now bidding work in the Massachusetts area and is producing **J-J Hooks** Concrete Safety Barrier in their Amesbury, MA plant. —*Rick Groves*

J.E. Hill & Modern Win Plant Certification Awards



Wylie Hill receives NPCA Quality Award of Excellence from Andy Wieser, NPCA Quality Assurance Committee chair.

For the fourth straight year **J.E. Hill Precast** of Leesburg, FL was awarded the Quality Award of Excellence during NPCA's *The Precast Show* in Charlotte, NC. In addition, **Modern Precast Concrete** of Easton, PA captured the award for the second time.

The Quality Award of Excellence is presented to the top four out of nearly 400 NPCA-certified plants that recorded the highest inspection scores in the previous year, placing **J.E. Hill** and **Modern Precast** in the top 1% of all NPCA certified plants. —*Moffette Tharpe*

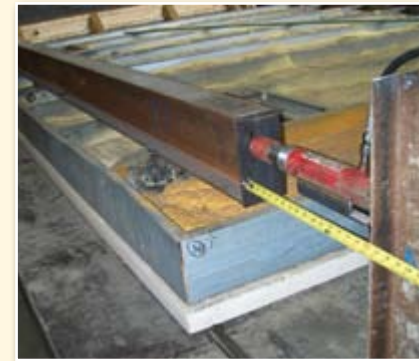


Vernon Wehrung receives NPCA Quality Award of Excellence from Andy Wieser, NPCA Quality Assurance Committee chair.

Technology Blips

Being Overweight is Never Fun

Being too heavy is never fun, especially when you consider the cost! This statement is even more crucial in the construction industry. **Easi-Set's SlenderWall** product can help reduce the weight of construction projects both literally and monetarily. To document this fact, **Easi-Set** recently funded an independent analysis to calculate the structural material savings for a typical 10-story building with a steel superstructure, a poured foundation, and a soil-bearing capacity of 3,000lbs/sf when designed using **SlenderWall** as compared to using traditional 6-inch heavy precast concrete. The analysis calculated a project savings of more than 42 tons of steel (9.4%) in the superstructure and more than 4 tons of steel (6.5%) in the foundation. These savings are in addition to those resulting from elimination of exterior framing costs, speed of construction, fewer sealant joints, reduced production schedules, and free "bonus" square footage on each floor. —*Moffette Tharpe*

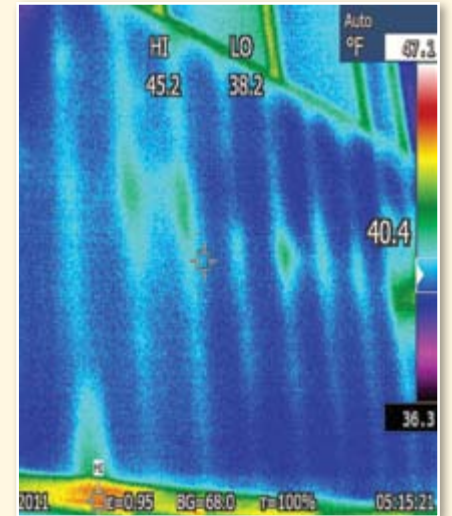


Foamed SlenderWall Panel Passes Extreme Flexure Test

SlenderWall producers are now offering customers plant-applied insulation using closed-cell foam. Application of the foam creates a stiffer panel, which could possibly affect its ability to accommodate building thermal stresses or differential movement caused by severe conditions such as high winds and earthquakes. To determine the panel's performance, **Easi-Set** designed a flexure test to simulate the differential movement between the floor edge and the architectural precast concrete outer surface. During the test, the differential movement was increased well beyond expected values and ultimately increased to the point of observed failure. The panel performed extremely well and maintained the necessary flexibility. A copy of the test is available on www.slenderwall.com or by contacting **Easi-Set Worldwide**. —*Rick Groves*

Infra-Red Scan of SlenderWall Panels

Recently, thermal imaging was performed on **SlenderWall** panels installed at Sacred Heart Hospital in Cumberland, MD to observe temperature patterns along the panel surfaces. The panels were produced and installed under contract to **Smith-Midland Corporation** in 2003. The panels were insulated by the general contractor using traditional fiberglass batts. Infra-red photographs verified that **SlenderWall's** embedded stud anchors were not thermally detectable and that a temperature differential of only 1°F to 1.5°F existed between the 6-inch framing studs and the architectural precast concrete surface. Overall, the infra-red patterns validated that the **SlenderWall** panels performed extremely well and "as designed." This infra-red technique also clearly showed how completely the batt insulation was installed. The infra-red temperature variations clearly indicate areas where the insulation was improperly installed, such as around windows, column lines and floor slabs. A copy of this report is available on www.slenderwall.com or by contacting **Easi-Set Worldwide**. —*Rick Groves*



SlenderWall Receives Dade County Certification

SlenderWall recently received the prestigious "Notice of Acceptance" from Miami-Dade County, Florida, NOA #091015.05, 3/31/2016 under the applicable rules and regulations governing the use of construction materials in Miami-Dade County and surrounding municipalities. **SlenderWall** complies with the *High Velocity Hurricane Zone* of the Florida Building Code and is also rated to be *Impact Resistant to Large and Small Missiles*. As such, it is the ideal choice for all types of coastal and non-coastal building panel applications. It can be provided with plant-installed windows and closed-cell foam insulation. —*Moffette Tharpe*



J-J Hooks Receives Patent on Advanced Features

Easi-Set Worldwide was recently awarded a patent on a unique “deflection limiter” feature incorporated into the design of the enhanced **J-J Hooks** precast barriers. This addition is intended to limit the lateral deflection of free-standing barrier when impacted by reducing the “crushing” of the concrete at the toe of the barriers on the traffic side. This new feature will be tested in upcoming crash tests of a bolted and pinned down configuration. Watch for these test results to be released later this year. —*Brian Stock*

J-J Hooks “End Taper” Feature Receives Trade Dress Protection

Easi-Set recently received “trade dress” protection from the U.S. Patent & Trademark Office for the taper at each end of a **J-J Hooks** barrier section. This feature is unique to **J-J Hooks** and, to our knowledge, is not used by any other barrier design available – another level of protection for our licensed producers. When our barriers are installed, the “end taper” creates a visible “V” between the sections, identifying it uniquely as **J-J Hooks**. Applications for this same “trade dress” protection are pending in Canada, Australia, and New Zealand. **Easi-Set** continues to enhance the **J-J Hooks** design to maintain its leadership position as the industry’s most successful and widely-used private design, the lowest-cost-to-produce, and the fastest to install and remove. —*Moffette Tharpe*

The Wide-Wide World of EASI-SET® Licensed Producers

UNITED STATES

Arkansas

Peterson Concrete Tank Co.
N. Little Rock; J-J Hooks®

California

StructureCast
Bakersfield; Buildings

Colorado

SEMA Precast, Inc.
Englewood; J-J Hooks®

Florida

**Florida Rock and Sand
Prestress Precast Co. Inc.**
Florida City; J-J Hooks®

J.E. Hill Precast

Leesburg; J-J Hooks®, Buildings,
Farm Products

Leesburg Concrete Co., Inc.
Leesburg; SlenderWall

Seminole Precast Mfg., Inc.
DeBary; J-J Hooks®

Georgia

Seminole Precast Mfg., Inc.
Macon; J-J Hooks®

The Industrial Co.
Savannah; J-J Hooks®

Illinois

Utility Concrete Products
Morris; J-J Hooks®

Indiana

Independent Concrete Pipe
Indianapolis; J-J Hooks®

Indiana Barrier Wall, LLC
Ft. Wayne; J-J Hooks®

Kentucky

Independent Concrete Pipe
Louisville; J-J Hooks®

Oldcastle Precast, Inc.
Lexington; J-J Hooks®

Massachusetts

Shea Concrete Products
Wilmington; Buildings, J-J Hooks®

Michigan

Kerkstra Precast
Grandville; J-J Hooks®

Mississippi

Jackson Precast, Inc.
Jackson; SlenderWall®

Nevada

Rockway Precast
N. Las Vegas; Buildings

New Jersey

Jersey Precast Corp.
Trenton; J-J Hooks®

New York

Brick Tavern Concrete Products
Hudson; Buildings

Champion Materials, Inc.
Carthage; J-J Hooks®

Fort Miller Co., Inc.
Schuylerville; J-J Hooks®

Kistner Concrete Products
E. Pembroke; J-J Hooks®

L.C. Whitford Materials Co., Inc.
Wellsville; J-J Hooks®

Roman Stone Const. Co.
Bay Shore; J-J Hooks®

North Carolina

Hanson Precast Concrete
Dunn; J-J Hooks®

Smith-Carolina Corp.
Reidsville; J-J Hooks®, Buildings,
Farm Products, Beach Prisms™

Ohio

Norwalk Concrete Ind.
Norwalk; J-J Hooks®, Buildings

Oklahoma

GNC Concrete Products, Inc.
Catoosa; J-J Hooks®

Pennsylvania

Eagle Concrete Products, Inc.
Somerset, PA; J-J Hooks®

Faddis Concrete Products
Kutztown, New Castle*,
Downingtown; J-J Hooks®

* Sublicensed by Eagle Concrete Products

Modern Precast Concrete
Easton; Buildings

Texas

Lonestar Prestress Mfg., Inc.
Houston; Buildings

Tricon Precast
Houston; J-J Hooks®

Valley Prestress (Williams Bros.)
Houston; J-J Hooks®

W.W. Webber, Inc.
Houston; J-J Hooks®

Vermont

SD Ireland Concrete Const. Corp.
Williston; J-J Hooks®

Virginia

Smith-Midland® Corp.
Midland; J-J Hooks®, Beach Prisms™,
SlenderWall®, Buildings, SoftSound,
Farm Products

West Virginia

Eastern Vault Company
Princeton; J-J Hooks®

CANADA

Nova Scotia

The Shaw Group
Lantz; J-J Hooks®

Ontario

C J Pink, Ltd
London; J-J Hooks®

Hy-Grade Precast Concrete
St. Catharines; Buildings, J-J Hooks®

Quebec

Bétons Préfabriqués Du Lac Inc.
Alma; SlenderWall®

Béton Provincial Ltee
Quebec City; Beach Prisms™

Lecuyer et Fils Ltee
St. Remi; Buildings

MEXICO

OptiCretos, S.A. de C.V.
Monterrey; SlenderWall®

AUSTRALIA

Australian Road Barriers
Victoria; J-J Hooks®

BELGIUM

**Oude Firma DeClercq Ed
Gent; J-J Hooks®**

NEW ZEALAND

B.S. Developments, Ltd.
Auckland; J-J Hooks®

EASI-SET STAFF:

Moffette Tharpe - Managing Director
Jeremy Smith - Deputy Director
Brian Stock - National Sales Manager
Rick Groves - Technical Services Director



Concrete Connection is published quarterly for the benefit of our licensed producers, their staff, our suppliers, team members, and selected interested parties. It is available in both print and electronic form. *Moffette Tharpe, Editor*

Easi-Set®, J-J Hooks®, and SlenderWall® are registered trademarks of Easi-Set Worldwide.

© 2011 Easi-Set® Worldwide · PO Box 400 · 5119 Catlett Road · Midland, VA 22728 · (540) 439-8911 · www.EasiSet.com